

CLIENT: Dr.Ganja

PRODUCT NAME: DD Purple Haze - Raw Material Analysis

LOT: L050624LI

BATCH: J072624BA

MATRIX: Hemp Oil

REPORT CREATED: 08/07/2024

Analyte	LOD (%)	%	mg/g
CBC	0.030		
CBCA	0.030	0.547	5.473
CBCV	0.030		
CBD	0.030		
CBDa	0.030	0.226	2.258
CBDV	0.030		
CBDVA	0.030		
CBG	0.030		
CBGA	0.030	1.218	12.178
CBL	0.030		
CBLA	0.030		
CBN	0.030		
CBNA	0.030	1.401	14.014
CBT	0.030		
Δ8-THC	0.030		
Δ9-THC	0.030		
Δ9-THCA-A	0.030	98.876	988.757
Δ9-THCP	0.030		
Δ9-THCVA	0.030	0.463	4.629
9R-HHC	0.030		
9S-HHC	0.030		

**90.095%**  
ACTIVE CANNABINOIDS



Total THC = THCa \* 0.877 + Δ9-THC; Total THCV = THCVa \* 0.877 + THCV; Total CBD = CBDa \* 0.877 + CBD;  
 Total CBG = CBGa \* 0.877 + CBG; Total CBN = CBNa \* 0.877 + CBN  
 LOD = Limit of Detection; ND = Not Detected  
 Total THC Measurement of Uncertainty: ± 1%  
 Total CBD Measurement of Uncertainty: ± 1%



DATA COLLECTED BY Cannalyze.co

Reporting limits will vary based on sample extraction weight used for the analysis. The results of this report are based solely on the sample submitted and cannot be reproduced. Average values are used to determine the final values.

Dr. Ganja

Sample: 08-06-2024-53090

Sample Received: 08/06/2024;

Report Created: 08/12/2024; Expires: 08/07/2025

Batch # J072624BA Lot # L050624LI - DD Purple Haze

Concentrate & Extracts



## Terpenes

(Testing Method: HS-GC/MS, CON-P-4000)

Date Tested: 08/06/2024

Analyte	LOD	LOQ	Mass	Mass	
	PPM	PPM	PPM	mg/g	
α-Bisabolol	0.750	3.000	522.850	0.523	
α-Humulene	0.750	3.000	962.470	0.962	
α-Pinene	0.750	3.000	2514.140	2.514	
α-Terpinene	0.750	3.000	324.840	0.325	
1,8-Cineole	0.750	3.000	<LOQ	<LOQ	
β-Caryophyllene	0.750	3.000	3400.750	3.401	
β-Myrcene	0.750	3.000	21621.530	21.622	
Borneol	0.750	3.000	<LOQ	<LOQ	
Camphene	0.750	3.000	<LOQ	<LOQ	
Carene	0.750	3.000	762.050	0.762	
Caryophyllene Oxide	3.000	3.000	>3.000	>0.003	
Citral	0.750	3.000	ND	ND	
Dihydrocarveol	0.750	3.000	ND	ND	
Fenchone	0.750	3.000	ND	ND	
γ-Terpinene	0.750	3.000	<LOQ	<LOQ	
Limonene	0.750	3.000	3494.500	3.494	
Linalool	0.750	3.000	540.450	0.540	
Menthol	0.750	3.000	ND	ND	
Nerolidol	0.750	3.000	ND	ND	
Ocimene	0.750	3.000	6884.240	6.884	
Pulegone	0.750	3.000	ND	ND	
Terpinolene	0.750	3.000	8360.240	8.360	
<b>Total</b>			49911.140	49.911	4.991 %

## Primary Aromas

Clove



Herbal



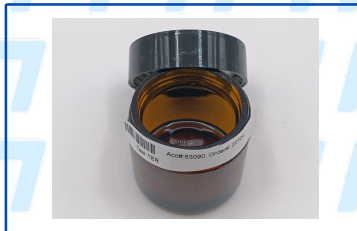
Earthy



Lime



Cinnamon



Total terpenes value is qualitative and includes concentrations outside the assay quantitative analytical range. Amended report released to reflect change in sample identification.

Dr. Ganja

Sample: 05-07-2024-49750

Sample Received: 05/07/2024;

Report Created: 05/16/2024; Expires: 05/13/2025

M050624YH - L050624LI - Diamond Distillate  
Concentrate & Extracts



## Heavy Metals

(Method of Analysis: ICP/MS, CON-P-7000)

Date Tested: 05/08/2024

Analyte	LOQ	Mass
	PPM	PPM
Arsenic	0.0962	<0.0962
Cadmium	0.0962	<0.0962
Lead	0.0962	<0.0962
Mercury	0.0962	<0.0962
Palladium	0.2404	<0.2404
Selenium	0.0962	<0.0962

Amended report issued to reflect change in sample identification.



New Bloom Labs  
6121 Heritage Park Drive, A500  
Chattanooga, TN 37416  
(844) 837-8223  
TN DEA#: RN0563975  
ANAB Testing Laboratory (AT-2868): ISO/IEC  
17025:2017

Vernon L. Alvarez, Ph.D

Mike Maskarinec, Ph.D  
Laboratory Director

Powered by  
reLIMS  
info@relims.com

Dr. Ganja

Sample: 05-07-2024-49750

Sample Received: 05/07/2024;

Report Created: 05/16/2024; Expires: 05/13/2025

M050624YH - L050624LI - Diamond Distillate  
Concentrate & Extracts



## Pesticides

(Testing Method: LC/MS/MS & HPLC-UV, CON-P-5000)

Date Tested: 05/07/2024

Analyte	LOQ	Mass	Analyte	LOQ	Mass
	PPM	PPM		PPM	PPM
Acephate	0.100	<0.100	Imazalil	0.100	<0.100
Acequinocyl	0.100	<0.100	Imidacloprid	0.200	<0.200
Acetamiprid	0.100	<0.100	Kresoxim Methyl	0.100	<0.100
Aldicarb	0.100	<0.100	Malathion	0.100	<0.100
Avermectin B1A	0.100	<0.100	Metalaxyl	0.100	<0.100
Avermectin B1B	0.100	<0.100	Methiocarb	0.100	<0.100
Azoxystrobin	0.100	<0.100	Methomyl	0.100	<0.100
Bifenazate	0.100	<0.100	Mevinphos	0.100	<0.100
Bifenthrin	0.100	<0.100	MGK-264	0.100	<0.100
Boscalid	0.100	<0.100	Myclobutanil	0.100	<0.100
Captan	0.700	<0.700	Naled	0.250	<0.250
Carbaryl	0.100	<0.100	Oxamyl	0.500	<0.500
Carbofuran	0.100	<0.100	Paclobutrazole	0.100	<0.100
Chlorantraniliprole	0.100	<0.100	Parathion Methyl	0.100	<0.100
Chlorfenapyr	0.100	<0.100	Pentachloronitrobenzene	0.150	<0.150
Chlormequat	0.100	<0.100	Permethrins	0.100	<0.100
Chlorpyrifos	0.100	<0.100	Phosmet	0.100	<0.100
Clofentazine	0.100	<0.100	Piperonyl Butoxide	1.000	<1.000
Coumaphos	0.100	<0.100	Prallethrin	0.100	<0.100
Cyfluthrin	0.500	<0.500	Propiconazole	0.100	<0.100
Cypermethrin	0.500	<0.500	Propoxur	0.100	<0.100
Diazinon	0.100	<0.100	Pyrethrins	0.500	<0.500
Dichlorvos (DDPV)	0.050	<0.050	Pyridaben	0.100	<0.100
Dimethoate	0.100	<0.100	Spinetoram	0.100	<0.100
Dimethomorph	0.100	<0.100	Spinosad A	0.050	<0.050
Ethoprophos	0.100	<0.100	Spinosad D	0.050	<0.050
Etofenprox	0.100	<0.100	Spiromesifen	0.100	<0.100
Etoxazole	0.100	<0.100	Spirotetramat	0.100	<0.100
Fenhexamid	0.100	<0.100	Spiroxamine	0.100	<0.100
Fenoxycarb	0.100	<0.100	Tebuconazole	0.100	<0.100
Fenpyroximate	0.100	<0.100	Thiacloprid	0.100	<0.100
Fipronil	0.100	<0.100	Thiamethoxam	0.100	<0.100
Flonicamid	0.100	<0.100	Trifloxystrobin	0.100	<0.100
Fludioxonil	0.100	<0.100	Chlordane	0.100	Not Detected
Hexythiazox	0.100	<0.100	Daminozide	0.100	Not Detected

Amended report issued to reflect change in sample identification.



New Bloom Labs  
6121 Heritage Park Drive, A500  
Chattanooga, TN 37416  
(844) 837-8223  
TN DEA#: RN0563975  
ANAB Testing Laboratory (AT-2868): ISO/IEC  
17025:2017

Vernon L. Alvarez, Ph.D

Mike Maskarinec, Ph.D  
Laboratory Director

Powered by  
reLIMS  
info@relims.com

Dr. Ganja

Sample: 05-07-2024-49750

Sample Received: 05/07/2024;

Report Created: 05/16/2024; Expires: 05/13/2025

M050624YH - L050624LI - Diamond Distillate  
Concentrate & Extracts



## Mycotoxins

(Testing Method: LC/MS/MS, CON-P-5000)

Date Tested: 05/07/2024

Analyte	LOQ	Mass
	PPB	PPB
Aflatoxin B1	5.000	<5.000
Aflatoxin B2	5.000	<5.000
Aflatoxin G1	5.000	<5.000
Aflatoxin G2	5.000	<5.000
Ochratoxin A	20.000	Not Detected

Amended report issued to reflect change in sample identification.



New Bloom Labs  
6121 Heritage Park Drive, A500  
Chattanooga, TN 37416  
(844) 837-8223  
TN DEA#: RN0563975  
ANAB Testing Laboratory (AT-2868): ISO/IEC  
17025:2017

Vernon L. Alvarez, Ph.D

Mike Maskarinec, Ph.D  
Laboratory Director

Powered by  
reLIMS  
info@relims.com

Dr. Ganja

Sample: 05-07-2024-49750

Sample Received: 05/07/2024;

Report Created: 05/16/2024; Expires: 05/13/2025

M050624YH - L050624LI - Diamond Distillate  
Concentrate & Extracts



## Microbials

(Testing Method: qPCR & 3M Petrifilm & SIM Plate, CON-P-6000, CON-P-9000)

Date Tested: 05/08/2024

Analyte	LOQ	Units
	CFU/g	CFU/g
Total Yeast and Mold Count	7	<7
Total Aerobic Bacteria Count	7	<7
Total Coliform Count	7	<7
Total Enterobacteriaceae/BTGN Count	7	<7
Aspergillus spp.		Not Detected
Shigatoxigenic Escherichia coli (STEC)		Not Detected
Salmonella		Not Detected
Listeria monocytogenes		Not Detected

Amended report issued to reflect change in sample identification.



New Bloom Labs  
6121 Heritage Park Drive, A500  
Chattanooga, TN 37416  
(844) 837-8223  
TN DEA#: RN0563975  
ANAB Testing Laboratory (AT-2868): ISO/IEC  
17025:2017

Vernon L. Alvarez, Ph.D

Mike Maskarinec, Ph.D  
Laboratory Director

Powered by  
reLIMS  
info@relims.com

Dr. Ganja

Sample: 05-07-2024-49750

Sample Received: 05/07/2024;

Report Created: 05/16/2024; Expires: 05/13/2025

M050624YH - L050624LI - Diamond Distillate  
Concentrate & Extracts



## Residual Solvents

(Testing Method: HS-GC/MS, CON-P-8000)

Date Tested: 05/07/2024

Analyte	LOQ	Mass	Analyte	LOQ	Mass
	PPM	PPM		PPM	PPM
1, 2 Dichloroethane	2.000	<2.000	Ethanol	1000.000	<1000.000
1,1 Dichloroethene	2.000	<2.000	Ethyl Acetate	250.000	<250.000
1, 2 Dimethoxyethane	20.000	<20.000	Ethyl Ether	250.000	<250.000
1, 4 Dioxane	100.000	<100.000	Ethylbenzene	100.000	<100.000
1,1,1 Trichloroethane	20.000	<20.000	Ethylene Oxide	5.000	<5.000
1,1,2 Trichloroethane	20.000	<20.000	Hexane	100.000	<100.000
1,2,3,4 Tetrahydronaphthalene	20.000	<20.000	Isobutanol	1000.000	<1000.000
2 Ethoxyethanol	20.000	<20.000	Methanol	100.000	<100.000
2 Hexanone	20.000	<20.000	n-Heptane	1000.000	<1000.000
2 Propanol	500.000	<500.000	n-Pentane	100.000	<100.000
Acetone	250.000	<250.000	n-Propanol	1000.000	<1000.000
Acetonitrile	20.000	<20.000	Nitromethane	10.000	<10.000
Benzene	1.000	<1.000	o-Xylene, m-Xylene, p-Xylene	100.000	<100.000
Butane	1000.000	<1000.000	Propane	1000.000	<1000.000
Chlorobenzene	100.000	<100.000	tert-Butanol	1000.000	<1000.000
Chloroform	2.000	<2.000	Tetrahydrofuran	100.000	<100.000
cis 1,2 Dichloroethene	100.000	<100.000	Toluene	100.000	<100.000
Diacetyl	100.000	<100.000	trans 1, 2 Dichloroethene	100.000	<100.000
Dichloromethane	100.000	<100.000	Trichloroethene	20.000	<20.000

Amended report issued to reflect change in sample identification.



New Bloom Labs  
6121 Heritage Park Drive, A500  
Chattanooga, TN 37416  
(844) 837-8223  
TN DEA#: RN0563975  
ANAB Testing Laboratory (AT-2868): ISO/IEC  
17025:2017

Vernon L. Alvarez, Ph.D

Mike Maskarinec, Ph.D  
Laboratory Director

Powered by  
reLIMS  
info@relims.com